

**TO LET**

# THE EXCHANGE

Office Accommodation within High Quality City Centre Building

---

**Market Street, Aberdeen, AB11 5PJ**

From 195.1 sq.m (2,100 sq.ft)  
to 1,448 sq.m (15,587 sq.ft)



# THE EXCHANGE

Office Accommodation within High Quality City Centre Building



## LOCATION & DESCRIPTION

The Exchange is situated on the west side of Market Street, overlooking Aberdeen's busy harbour and in the heart of the City Centre. The central location ensures easy access to public transport, with the City's principal bus and train stations immediately to the rear. Aberdeen's main commercial thoroughfare, Union Street, is within a two minute walk and the new Union Square Leisure and Shopping Centre is immediately adjacent, ensuring a vast array of local amenity.

The Exchange provides high quality, open plan office accommodation arranged over ground and eight upper floors and split between two buildings; The Exchange No 1 and The Exchange No 2.

The available accommodation is all located within The Exchange No 1 and comprises the entire ground, part 3rd, and 4th floors. The accommodation has recently been refurbished to a high standard to provide the following;

- Flexible open plan floor plates
- Two pipe VRV comfort cooling / heating, with ceiling mounted fan coil units
- Metal raised access floors and suspended ceiling system
- Commissionaire manned reception area
- CCTV system (for building)
- Access via 2 No 10 person passenger lifts (fully DDA compliant)
- Male, female and disabled toilets on each floor
- Designated male, female and disabled shower facilities

## CAR PARKING

Ground Floor .....6 spaces  
3rd Floor.....6 spaces  
4th Floor .....12 spaces

## LEASE TERMS

Our client is seeking to lease the available space (either as a whole, or on a suite by suite basis) on Full Repairing and Insuring lease terms. The rent will be subject to upward only review at 5 yearly intervals.

## RENT

On application.

## SERVICE CHARGE

Any ingoing tenant will be responsible for a service charge in relation to the maintenance, repair, servicing and management of the common internal and external parts of the building and the development. A service charge budget will be provided to interested parties on application.

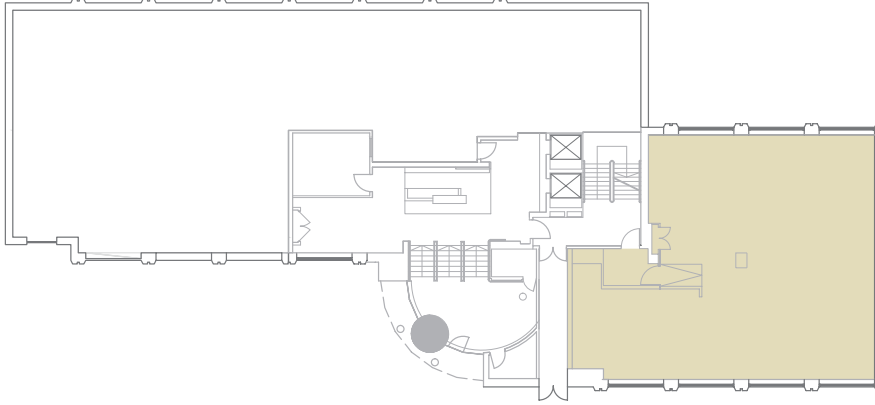


FLOOR AREAS

TOTAL 1,448 SQ.M (15,587 SQ.FT)

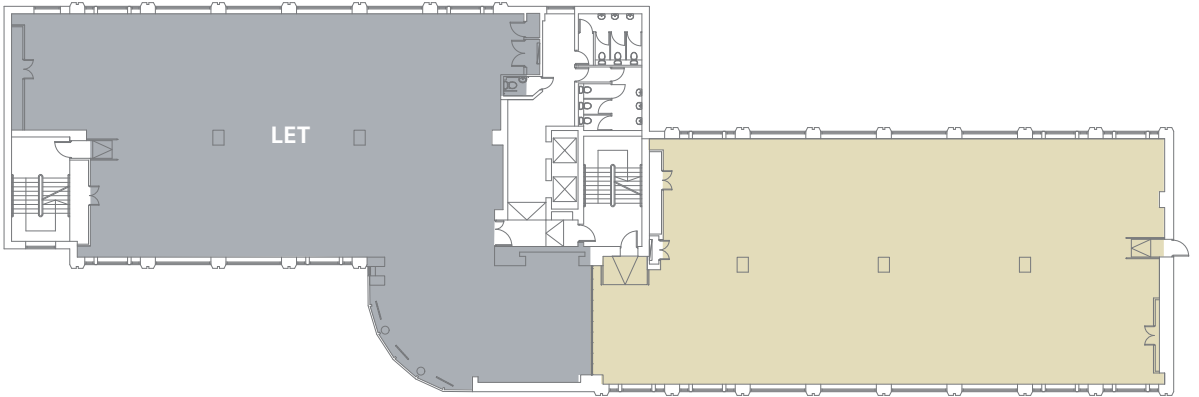
**GROUND  
FLOOR**

195.1 sq.m  
(2,100 sq.ft)



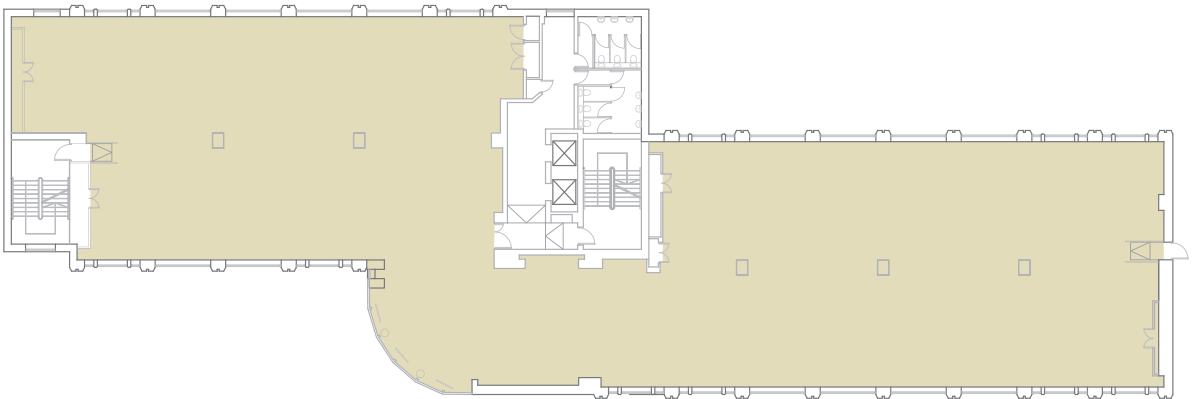
**THIRD  
FLOOR**

407.5 sq.m  
(4,387 sq.ft)



**FOURTH  
FLOOR**

845.4 sq.m  
(9,100 sq.ft)





### RATEABLE VALUE

The suites will require to be reassessed for Rates upon occupation. An indicative Rateable Value can be provided to interested parties on application.

### EPC

The building benefits from an EPC rating of E.

### VAT

VAT will be payable at the standard rate.

### LEGAL COSTS

Each party will bear their own legal costs associated with the documentation of any transaction. The incoming tenant will be responsible for any Land and Buildings Transaction Tax and registration dues applicable.

### ENTRY / AVAILABILITY

Further information available from the landlord's agent on application.

### VIEWING & OFFERS

Viewing is strictly by arrangement with the joint agents to whom all offers should be submitted in Scottish legal form.



#### Graeme Nisbet

T: 01224 597532 / E: [graeme.nisbet@fgburnett.co.uk](mailto:graeme.nisbet@fgburnett.co.uk)

#### Jonathan Nesbitt

T: 01224 597531 / E: [jonathan.nesbitt@fgburnett.co.uk](mailto:jonathan.nesbitt@fgburnett.co.uk)



#### Dan Smith

T: 01224 971134 / E: [dan.smith@savills.com](mailto:dan.smith@savills.com)

#### Simpson Buglass

T: 01224 971 133 / E: [sbuglass@savills.com](mailto:sbuglass@savills.com)

DISCLAIMER: Whilst every care has been taken in the preparation of these particulars and they are believed to be correct, they are not warranted and should not be taken to form part of any contract. Any purchaser or lessee should satisfy themselves as to the correctness of each of the statements contained in these particulars. The owner of the property does not make or give and neither the agents nor any person in their employment has any authority to make or give any representation or warranty in relation to the property described in these particulars.